

CORONAVIRUS RISK ASSESSMENT - LEISURE CENTRE

Oswestry Otters ASC

<p>Hierarchy of control measures:</p> <ol style="list-style-type: none"> 1. Avoiding contact with anyone with symptoms. 2. Frequent hand washing & good respiratory hygiene practices. 3. Regular cleaning of settings. 4. Minimising contact and mixing. 						
What are the hazards?	Who might be harmed and how?	What are you already doing?	Do you need to do anything else to control this risk?	Action by who?	Action by when?	Done
Effective Infection protection & control						
Catching or spreading coronavirus – General considerations	Coaches, poolside helpers, swimmers, parents, guardians	<ul style="list-style-type: none"> · To follow Operators rules in conjunction with our agreed risk assessment. · Parents to remain in cars at all times whilst they drop off children at Oswestry Leisure Centre. Parents may wait onsite provided they remain in their cars to limit volume of public in the Centre. Staggered times for drop off and collection to avoid congestion. · Only one parent per child is permitted to drop-off and collect. 		Club to communicate expectations with parents & swimmers	ongoing	

CORONAVIRUS RISK ASSESSMENT - LEISURE CENTRE

Oswestry Otters ASC

		<ul style="list-style-type: none">· All coaches and poolside helpers to check temperatures before arriving at the Leisure Centre.· This should be taken twice if the first reading measures high, to ensure a true reading. They should not enter the Leisure Centre unless they have checked their temperature at home and the reading is 37.5°C or below.· All swimmer's temperatures to be checked by parents/guardians (in the case of older swimmers, by themselves) at home prior to attending the Leisure Centre.· This should be taken twice if the first reading measures high, to ensure a true reading. Parents/guardians are not to leave swimmers unless they have checked their temperature at home and the reading is 37.5°C or below.· All swimmers advised to shower at home before attending training.· Parents, swimmers and staff must not enter the Leisure Centre grounds				
--	--	--	--	--	--	--

CORONAVIRUS RISK ASSESSMENT - LEISURE CENTRE

Oswestry Otters ASC

		<p>if they or anyone in their household has symptoms.</p> <ul style="list-style-type: none">· All swimmers/parents/guardians must complete all the documentation listed below before their return to swimming.· Any child (or other persons) who becomes unwell with symptoms of coronavirus while at the premises will be isolated as quickly as possible until they are collected from the premises. Lifeguards will be notified immediately and a report will be filed with the Leisure Centre/PHE.· Once swimmers are divided into their lane groups (6 swimmers per lane), they will remain in this group to limit contact with others.· Level X to be run in accordance with Swim England Guidelines. Details can be found here: https://www.swimming.org/sport/what-are-the-racing-conditions/· Additional officials for Level X will be used in accordance with the Swim England Guidelines which can be found here:				
--	--	---	--	--	--	--

CORONAVIRUS RISK ASSESSMENT - LEISURE CENTRE

Oswestry Otters ASC

		<p>https://swimming.app.box.com/s/ym4q5uvu37h5di9sxc9pqos58carhmn1/file/730016435336</p> <ul style="list-style-type: none"> · Cleaning hands more often than usual and supporting swimmers who may struggle with this independently. · Ensure good respiratory hygiene by all promoting the 'catch it, bin it, kill it' approach. · Coaches/Covid officers to sanitise frequently touched surfaces on poolside (such as diving blocks). · All swimmers or their parents/ guardians must complete the Health Survey to ensure we can identify vulnerable or high risk members. 				
Virus transmission via <u>direct</u> contact	Coaches, Poolside helpers and swimmers by becoming infected with Covid-19 virus	<p>Reduce the use of shared resources:</p> <ul style="list-style-type: none"> · All swimmers to use their own resources (floats, goggles, pull buoys etc). · Swimmers are not to share any equipment. 	<ul style="list-style-type: none"> · Remind swimmers using toilets of 20 second hand washing rules. 	Coaches and poolside helpers.	Ongoing	Ongoing

CORONAVIRUS RISK ASSESSMENT - LEISURE CENTRE

Oswestry Otters ASC

		<ul style="list-style-type: none">· All equipment must be clearly labelled.· All swimmers must place their equipment in separate piles (not touching).· All equipment must be cleaned before and after entry into the pool using the pool water.· Swimmers to enter and exit via the one way system as per the attached plan.· Swimmers will be swimming in the same direction, spaced out as far as possible following the Swim England.· Promote and remind swimmers/coaches/covid officers about good respiratory hygiene i.e. catch it, bin it, kill it.· Ensure lane arrangements are spaced out.· Swimmers and coaches/Covid Officers to remain in their distinct groups for the session to reduce contact between the groups.			Before training starts each day.	
--	--	---	--	--	----------------------------------	--

CORONAVIRUS RISK ASSESSMENT - LEISURE CENTRE

Oswestry Otters ASC

<p>Virus transmission via <u>indirect</u> contact</p>	<p>Coaches, poolside helpers and swimmers becoming infected with Covid-19 virus</p>	<ul style="list-style-type: none"> · Swimmers are only allowed to use their own 'clean' equipment to minimise sharing. · Swimmers ensure their own equipment is cleaned prior to attending a session. · Radio's used where it is helpful to manage the movement of swimmers and to be wiped with multi-purpose wipes immediately after use. 			<p>Ongoing</p>	
<p>Reduce mixing within setting</p>	<p>Coaches/ Poolside helpers/ swimmers</p>	<ul style="list-style-type: none"> · Staggered starting and ending sessions to minimise overcrowding. · Different entry/exit points as per the attached plan.. · One swimmer to use the toilet facility at a time. 	<p>Assess if some groups of swimmers need additional support to follow these measures once at the pool (for example using correct entry/exit doors and providing the correct amount of support without having too many additional people poolside.</p>	<p>Coaches and poolside helpers</p>	<p>Ongoing</p>	

CORONAVIRUS RISK ASSESSMENT - LEISURE CENTRE

Oswestry Otters ASC

<p>Use of Personal protective equipment (PPE) in pool settings against COVID-19</p>	<p>Coaches/ Covid Officers and swimmers</p>	<ul style="list-style-type: none"> · Faces masks are to be worn at all times in the facility other than in the pool and when the Coach has instructed them to remove. · Coaches/Covid Officers to wear facemasks at all times in the facility other than when they are poolside. 				
<p>First Aid</p>	<p>Coaches/ Poolside helpers</p>	<p>All First Aid requirements are dealt with by the operator.</p>	<p>Pool operators</p>		<p>ongoing</p>	

CORONAVIRUS RISK ASSESSMENT - LEISURE CENTRE

Oswestry Otters ASC

<p>Accidents/ Incidents</p>	<p>Coaches/ Poolside helpers</p>	<ul style="list-style-type: none"> · Normal report of incidents to various parties i.e. parents/guardians/Pool Operator · Reporting of COVID-19 to Health & Safety Team. All coaches, COVID-19 Officers and Assistant COVID-19 Officers listed at back. · Consider looking at high risk activities to minimise the potential for accidents and the need for staff to assist swimmers. · In the event that a Coach/Assistant coach/COVID-19 officer becomes unwell with symptoms of coronavirus while at the premises they will leave the premises immediately. An alternative Coach/Assistant/COVID-19 Officer will be called using the emergency phone to come to the premises to take over. In the event that the session can not be continued, all swimmers will be asked to exit the pool immediately, maintaining social distancing around the pool. Swimmers will be directed to enter the changing rooms as per the operators guidelines. Parents must remain in their cars ready to receive children exiting. 	<p>All high-risk activities to be discussed with the Head Coach in advance and risk assessment conducted.</p>			
--	--	---	---	--	--	--

CORONAVIRUS RISK ASSESSMENT - LEISURE CENTRE

Oswestry Otters ASC

<p>Emotional distress of the coaches /volunteers – including anxiety</p>	<p>Coach/ Volunteer</p>	<ul style="list-style-type: none"> · At least one Senior Lead member of committee/coaching to be on site every day for others to share concerns with – open door policy. · At least one Covid-19 Support worker to be on site during every session to be responsible and facilitate all matters relating to this risk assessment who must be a member of ASA and have a DBS · Committee/volunteers/coaches have been included with the decision making, risk assessments. Team meetings conducted 16.06.2020 / 03.07.2020 / 10.07.2020. · Review measures to ensure it is manageable. · Swimmers to be supported by coaches/poolside helpers. · Look at ways of being able to support swimmers if in need of comfort, coaches/volunteers must feel comfortable. 		<p>Committee/ Coaching Team</p>	<p>ongoing</p>	
<p>Emotional distress of the swimmers</p>						

CORONAVIRUS RISK ASSESSMENT - LEISURE CENTRE

Oswestry Otters ASC

		<ul style="list-style-type: none">Disability swimmers – review assessments to be able to further assist and identify swimmers who will struggle with the changes.				
Use of Car Park for cars and other forms of transport	All	<ul style="list-style-type: none">No one other than the swimmer is to leave the car and enter the Leisure Centre building.Parents/guardians/coaches/committee have been informed that they must remain in the car at all times whilst on site.				

CORONAVIRUS RISK ASSESSMENT - LEISURE CENTRE

Oswestry Otters ASC

Safe Systems of Work to be outlined below once completed:

- All coaches/volunteers to be given sufficient information/training to be able to work safely and where practicable maintain the 2m distancing protocol. (Regular Team meetings, see above dates.)
- Continue monitoring and reviewing risk assessments and other health and safety advice for children, young people and coaches/volunteers in light of recent government advice, identifying protective measures (such as the things listed above) – ongoing.
- Ensure that all Health & Safety compliance checks (e.g. premise, safety and security systems have been undertaken before opening and sufficient coaches/volunteers are available to undertake these tasks.

Communicate to all parties is essential:

- Tell swimmers/parents/guardians/volunteers/coaches not to enter the setting if they are displaying any symptoms of coronavirus (following the COVID-19 Guidance for households with possible Coronavirus infection. Letter sent to all parties. [date sent]
- Tell parents/guardians that their swimmer must only be dropped off by one parent/guardian at a time and parent must remain in car at all times. [date letter sent]
- Tell parents/guardians/swimmers their allocated drop off and collection times and the process for doing so, including protocols for minimising adult to adult contact (for example, which entrance to use). [date letter sent]
- Make clear to parents that they must stay in their cars at all times and under no circumstances must they gather at entrance gates or doors or enter the site . [insert dates correspondence sent]

CORONAVIRUS RISK ASSESSMENT - LEISURE CENTRE

Oswestry Otters ASC

- Talk to volunteers/coaches about the plans (for example, safety measures, timetables, staggered arrival and departure, discuss whether training would be helpful. Team meetings conducted and timetable provided [insert dates]
- Communicate early with contractors and suppliers that will need to prepare to support your plans for opening for example the pool venue, cleaners, hygiene suppliers – ongoing
- No Swimmer will be allowed to return without the necessary documentation completed.

INFORMATION SENT TO PARENTS [insert date sent]

Risk Assessment & Plans

Pool and Changing Room Protocol

Video of Changes

Advice for returning to exercise after Covid-19

Health Survey

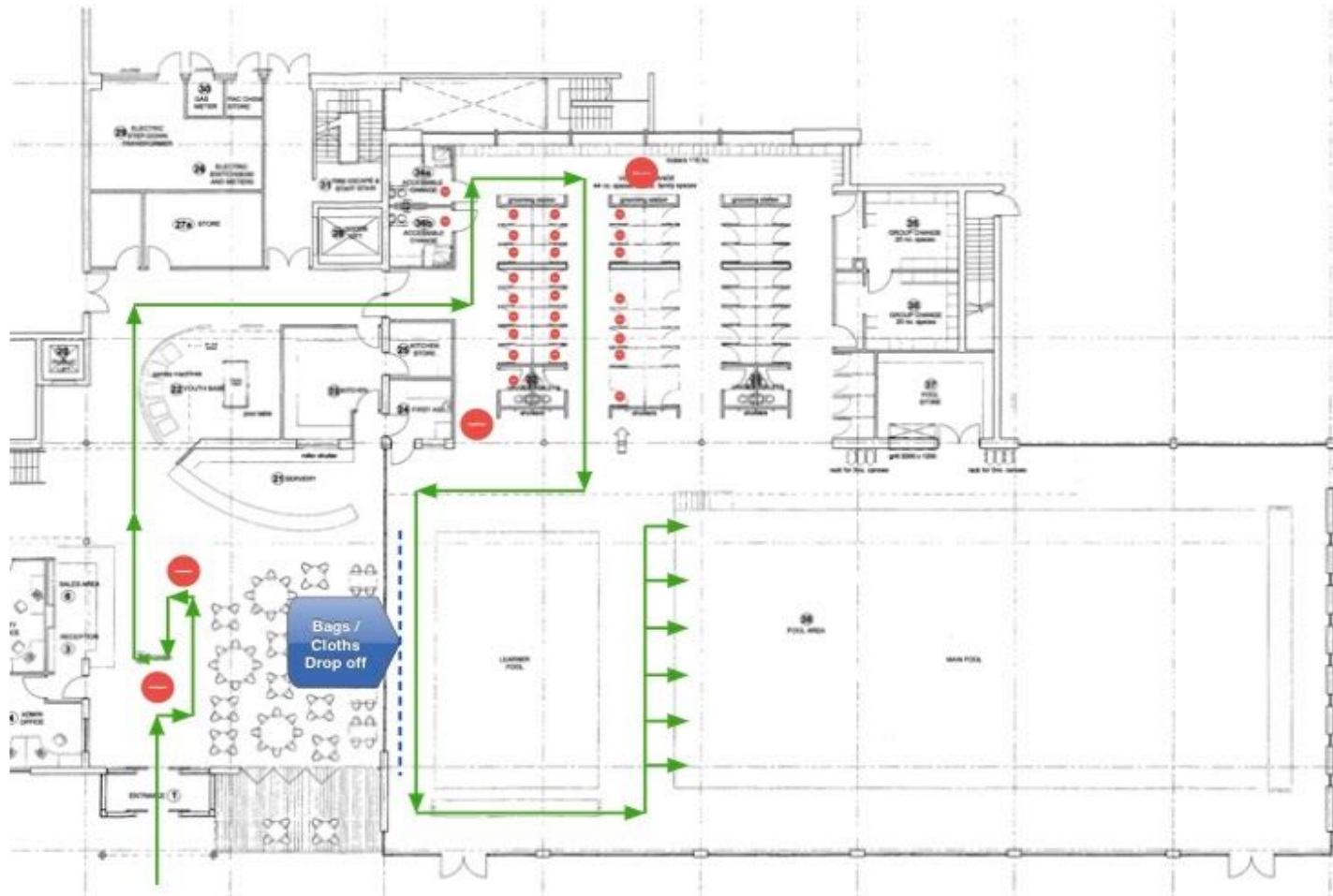
Training Venue Assessment

Member Survey

Request for Updated contact information

CORONAVIRUS RISK ASSESSMENT - LEISURE CENTRE

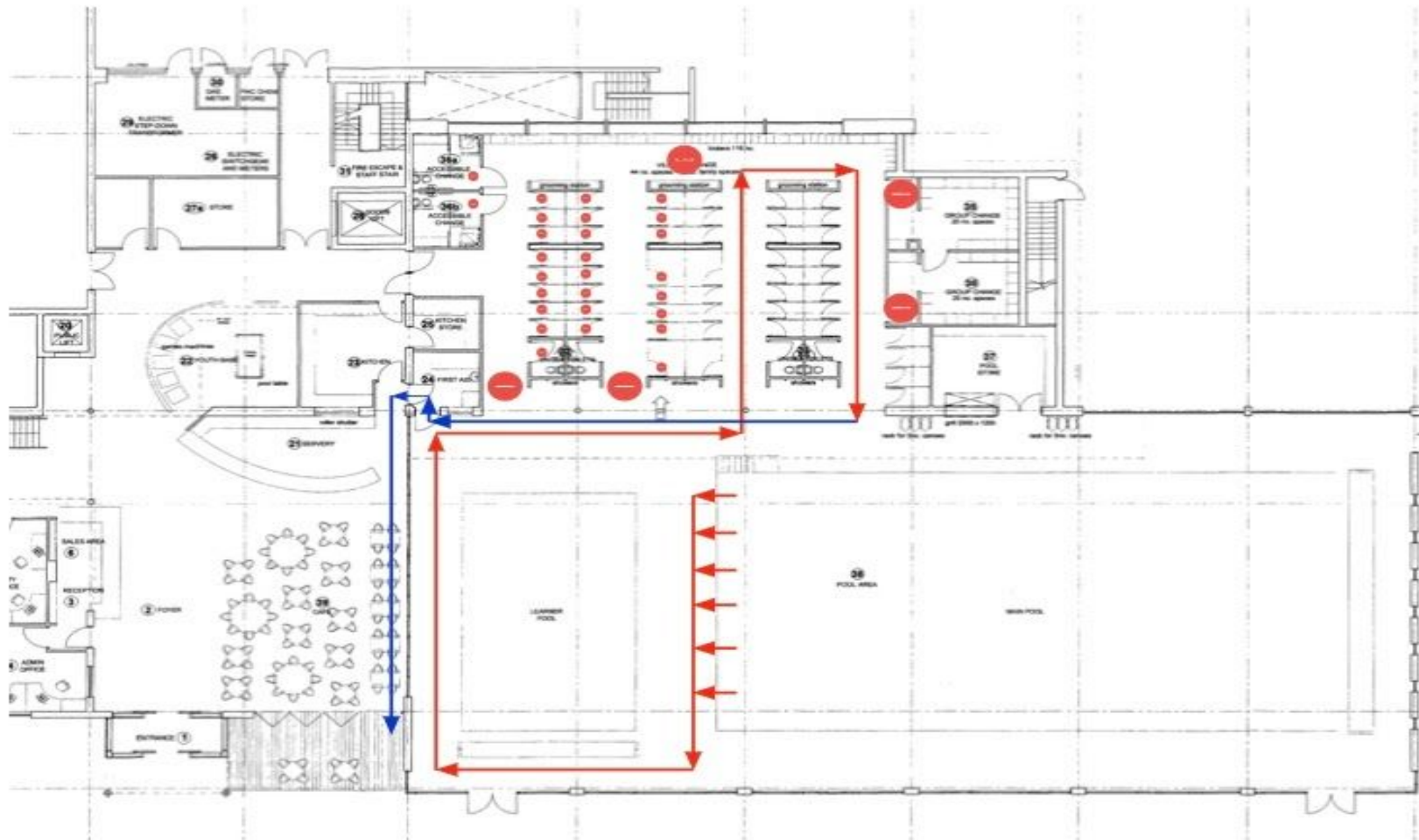
Oswestry Otters ASC



APPENDIX A- ENTRANCE PLAN

CORONAVIRUS RISK ASSESSMENT - LEISURE CENTRE

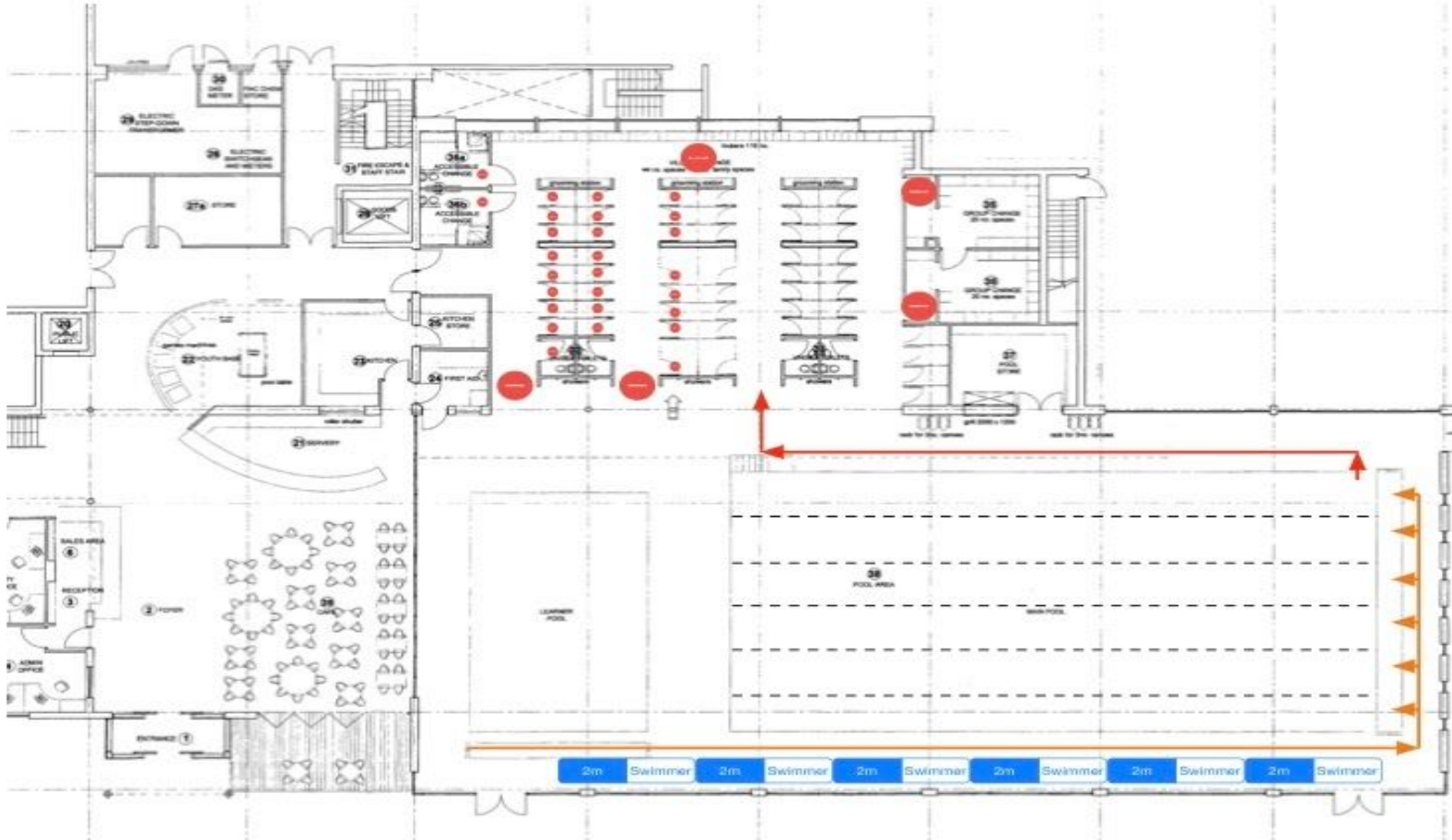
Oswestry Otters ASC



APPENDIX B - EXIT PLAN

CORONAVIRUS RISK ASSESSMENT - LEISURE CENTRE

Oswestry Otters ASC



APPENDIX C - LEVEL X PLAN

CORONAVIRUS RISK ASSESSMENT - LEISURE CENTRE

Oswestry Otters ASC

APPENDIX D - COACHES AND COVID OFFICERS

NAME	POSITION
Tim Hastie	Head Coach/Assistant COVID-19 Officer
Andy Lee	Coach
Yvonne Edwards	Coach
Jackie Downes	Coach
Ethan Lee-Birch	Assistant Coach
Chris Onley	Assistant Coach
Sarah Ball	Assistant Coach
Clare Curtis	Assistant Coach
Alex Nash	COVID-19 Officer/Assistant Coach
Laura Seddon	Assistant COVID-19 Officer
Haf Evans	Assistant COVID-19 Officer
David Stovin	Assistant COVID-19 Officer
Olivia Halligan	Assistant COVID-19 Officer
Andy King	Assistant COVID-19 Officer
Asha Turner-Tarr	Poolside Helper